



CASE STUDY

The National Park Service, World War II Memorial

A CLOSER LOOK

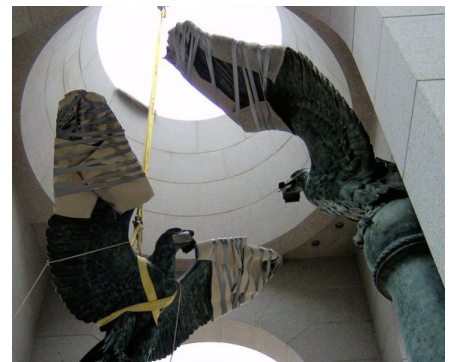
- › We crafted 8 stainless steel armatures, each made from 38 individual steel components.
- › We crafted the stainless steel ribbons that would hold up the 3,500 lb. wreaths.
- › All structural and sculptural components were shipped from our shop to the project site.
- › We collaborated with crane operators to set each eagle in place.
- › The 32-foot-tall, 10-foot-wide bronze eagle sculptures were lowered through the tops of each pavilion with only a 3-inch clearance and were installed on their pedestals.
- › Each laurel wreath was installed inside of each pavilion, suspended using the stainless steel ribbon, and securely welded in place.

CLIENT CHALLENGE

The National Park Service commissioned the design and construction of the World War II Memorial in Washington, D.C. to honor those who served in the Atlantic and Pacific theaters of war. The National Park Service sought the services of APEX to create structural supports that would suit the sculptural dimensions set by the Memorial's artists and designers.

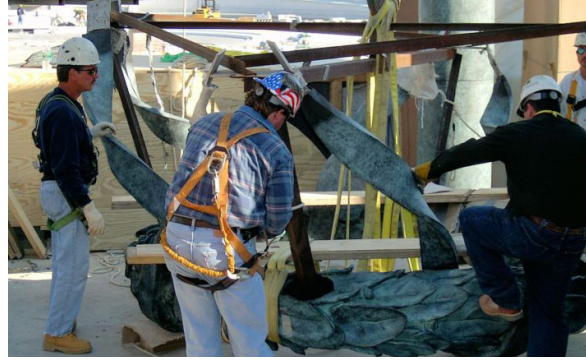
APEX SOLUTION

APEX created supports that perfectly suited the sculptural dimensions and were used as the skeletons upon which the artists casted eight bronze eagle sculptures. Each eagle was placed on their own pedestal inside of a larger pavilion. The design called for the eagles to be holding flowing ribbons in their beaks, which were used to suspend an oak laurel wreath inside of each pavilion.



PROJECT RESULTS

The installation process was completely successful and without incident. The memorial opened on April 29, 2004, and an incredible dedication ceremony was held on May 29, 2004. In 2018, more than 4.6 million people visited the memorial.



A SPECIAL NOTE FROM APEX

During the fabrication process, our shop acted as a hub for all those involved with the Memorial to work and share ideas. We're tremendously honored to have taken part in such a historic project. Many of our own parents, grandparents, aunts, and uncles served the United States in World War II. Because of this, we decided to keep our doors open to visitors and welcomed all those who served and were to be remembered and honored by the Memorial.

Additionally, we wanted to show our respect to those who may not have been able to travel to the official dedication ceremony. To that end, we hosted our own Visitor's Day and Memorial Ceremony right in our shop before shipping out the eagles and wreathes. We welcomed all the local veterans who were to be remembered by this project and their families. Former Governor Ruth Ann Minner, members of her administration, representatives from our armed forces, and the tradesmen, craftsmen, and artisans who worked on the project were in attendance as well.

**Contact us today to learn how APEX
can help with your next project.**

1 (888) 995-2739 | sales@apexpiping.com | apexpiping.com
302 Falco Drive, Wilmington, DE 19804

APEX
Mechanical & Fabrication